

FOR SALE

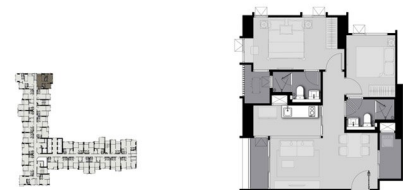
RESIDENTIAL - CONDOMINIUM 646SQFT (60SQM) / CALL FOR PRICE!

+65 9730 3338



2 - Bedroom

TYPE F
646 sqft



RESIDENTIAL - CONDOMINIUM

CHOM PHON, CHATUCHAK, 10900, BANGKOK,
BANGKOK, THAILAND

- LISTING ID: SGLD41175307
- TENURE: FREEHOLD
- TITLE: N/A
- SIZE BUILT-UP: 646SQFT (60SQM)
- SIZE LAND: 7.512AC (3.040HA)
- NO. OF FLOORS: 44
- FLOOR/LEVEL: N/A - MIDDLE FLOOR
- BED ROOMS: 2
- BATH ROOMS: 2
- MAIDS ROOMS: N/A
- PARKING SPACES: N/A
- LAYOUT TYPE: OTHER
- FACING: N/A
- VIEWING: N/A
- SELLING PRICE: **CALL FOR PRICE!**
- COMPLETION YEAR: 2021
- CONDITION: ORIGINAL CONDITION
- FURNISHING: PARTIALLY FURNISHED
- LISTING DATE: DEC 18, 2019

LIFE LADPRAO VALLEY

Partially furnished, 2 bedroom, 2 bathroom Condominium for Sale. Completed in 2021, this unit is in original condition. Others: Freehold Location: Bangkok, Thailand

INTERIOR FACILITIES

- Air-Conditioning
- Balcony

OTHER INTERIOR FEATURES

- Cooker Hob/Hood

EXTERIOR FACILITIES

- 24 Hours Security
- Business Centre
- Covered Car Park
- Function Room

VISIT THIS PROPERTY AT: <https://www.eunicechew.sg/property/SGLD41175307>

EUNICE CHEW - HUTTONS ASIA PTE LTD

3 Bishan Place #05-01 CPF Bishan Building
D20, 579838, Singapore

+65 9730 3338
WhatsApp Me

eunice3338@gmail.com

<https://www.eunicechew.sg>



Scan QR Code

Huttons® Call for Viewing
The Agency of Choice +65-97303338